

Mastercam Software Extension

Excel Manager



Mastercam[®]

Table of Contents

Product Information

Introduction

Installation

Understanding Excel Parameters

User Guide:

1. Set Operations File Path
2. Set Excel File Path
3. Verifying Level Names
4. Add Part and Run

Troubleshooting

Conclusion

Product Information

Product Name : Excel Manager for Mastercam

Product Description : The Excel Manager enables users to easily access and import toolpath data stored in an Excel sheet and set important parameters such as layer name, operation type, tool diameter, feed, spindle speed, depth of cut, and top of stock in Mastercam.

Software Version : 2024 (For older versions of the software, please contact sales@theebyte.com)

Version : 1.0.0.0

Number Of Seats : 1

License Type : Perpetual

License Duration : Unlimited

Release Date : 02-01-2023

Introduction

The Excel Manager add-on is a powerful tool for streamlining the toolpath creation process in Mastercam software. It provides a simple and convenient way to store and access toolpath data stored in an Excel sheet and set important parameters such as **layer name, operation type, tool diameter, feed, spindle speed, depth of cut, and top of stock**.

Users can quickly and easily load reference to the operations folder, execute the process with a single click, and have a comprehensive overview of all the operations and parameters for each toolpath.

The add-on also includes logging functionality for debugging and error handling.

The step-by-step guide makes it easy for even non-technical users to get started with the add-on.


Installation

To install the Excel Manager, simply open extract all files for your download version, and run "Mastercam Excel Manager .exe"

- > A pop-up will appear that says successfully installed
- > Make sure Mastercam is closed before installing

Name	Type	Compressed size	Password ...	Size	Ratio	Date modified
add-ins	File folder					
Mastercam	File folder					
Applcon.ico	ICO File	17 KB	No	258 KB	94%	2023-06-06 7:57 PM
Mastercam Excel Manager 2024.exe	Application	54 KB	No	348 KB	85%	2023-06-06 7:22 PM
Read Me.txt	Text Document	1 KB	No	1 KB	28%	2023-04-24 2:03 AM

Compressed (zipped) Folders



This application may depend on other compressed files in this folder.

For the application to run properly, it is recommended that you first extract all files.

Name	Date modified	Type	Size
Today			
Read Me.txt	2023-06-22 8:50 PM	Text Document	1 KB
Applcon.ico	2023-06-22 8:50 PM	ICO File	258 KB
Mastercam Excel Manager 2024.exe	2023-06-22 8:50 PM	Application	348 KB
add-ins	2023-06-22 8:50 PM	File folder	
Mastercam	2023-06-22 8:50 PM	File folder	

Understanding Excel Parameters

	A	B	F	G	H	I	J	K
1	Layer Name	Operation	Tool dia	Feed	Spindlespeed	Depth of cut	Opertation type	top of stock
2	target level	2D_1.SENDMILL_COUNTER - REMACHINING	3	2000	5600	1	CONTOUR	2
3	target level 2	2D_1.SENDMILL_COUNTER - REMACHINING	3	2000	5600	1	CONTOUR	3

- > The Excel Manager uses the information in the columns of an excel file to bring the information into levels in Mastercam
- >The add-on will read the data from the sheet and store it in a list of "Mastercam Operation" objects.
- > The following table shows each column parameter in excel and its description:

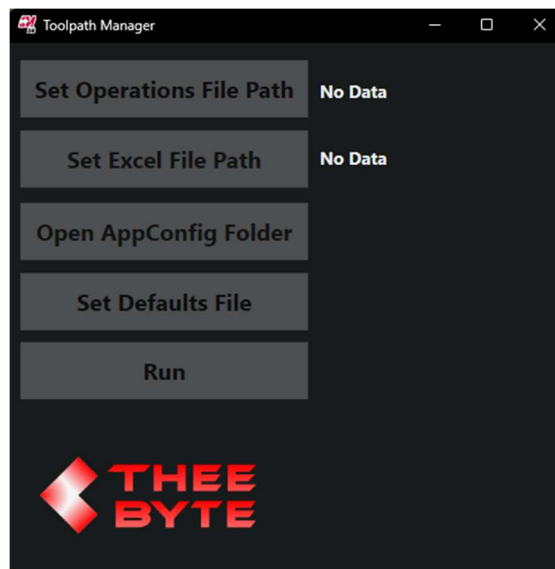
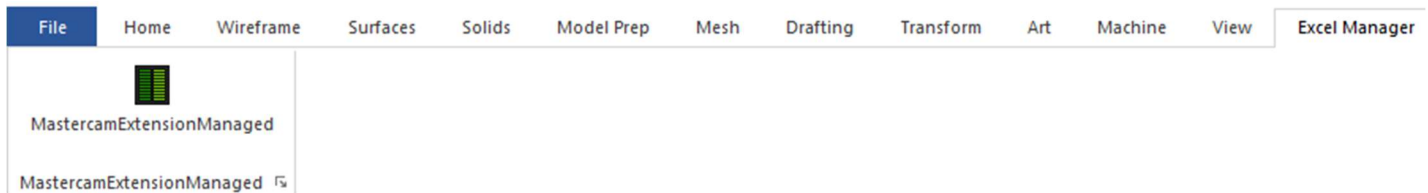
Column Name	Description
LayerName	The target level that the toolpath should be assigned to, such as contour, pocket, or drilling operation.
Operation	The name of the operation file.
DepthFrom	The override depth value.
Keep_Stock_and_run_balance_stock	Not used.
Operation_Running_Sequence	Not used.
Tool_dia	The tool diameter. Overrides the original value in the operation library.
Feed	The feed rate. Overrides the original value in the tool library.
Spindlespeed	The spindle speed. Overrides the original value in the operation library.
Depth_of_cut	The depth of cut. Overrides the original value in the operation library.
Operation_type	The type of operation, such as contour, drill, or pocket.
top_of_stock	The top of stock. Overrides the original value in the tool library.

Note: Mastercam operations are stored in Mastercam files with extensions .mcam or .mcam-operation. Each Mastercam file contains only one operation.

User Guide

Getting started: To start using the Excel Manager, simply open Mastercam and select the Excel Manager tab.

> Click “Mastercam Extension Managed” button. This will open the Excel Toolpath Manager window.

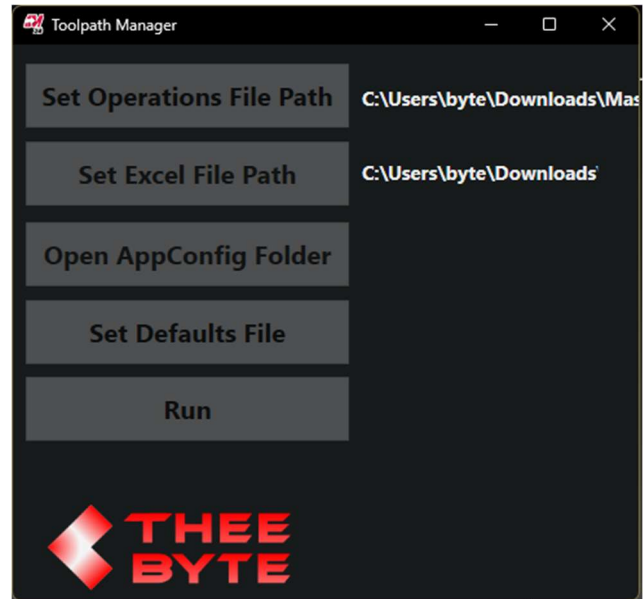
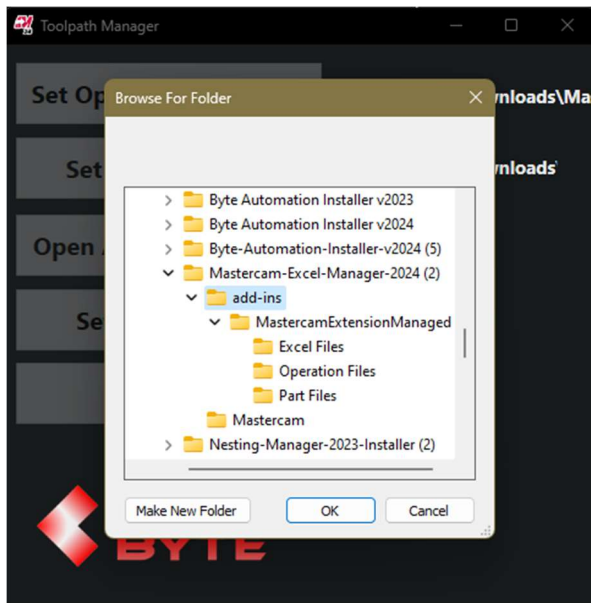


1. Set Operation File Path

- > The operations file path is the folder that contains operation libraries.
- > Set it by clicking the button “Set Operation File Path” and choose the path.
- > The folder path will be displayed in the Excel Manager.

2. Select Excel File

- > The Excel File Path is path of the excel file with parameters.
- > Set it by clicking the button “Set Excel File Path” and choose the path.
- > The excel file will be displayed in the Excel Manager.



Name	Type	Compressed size
Excel Files	File folder	
Operation Files	File folder	
Part Files	File folder	

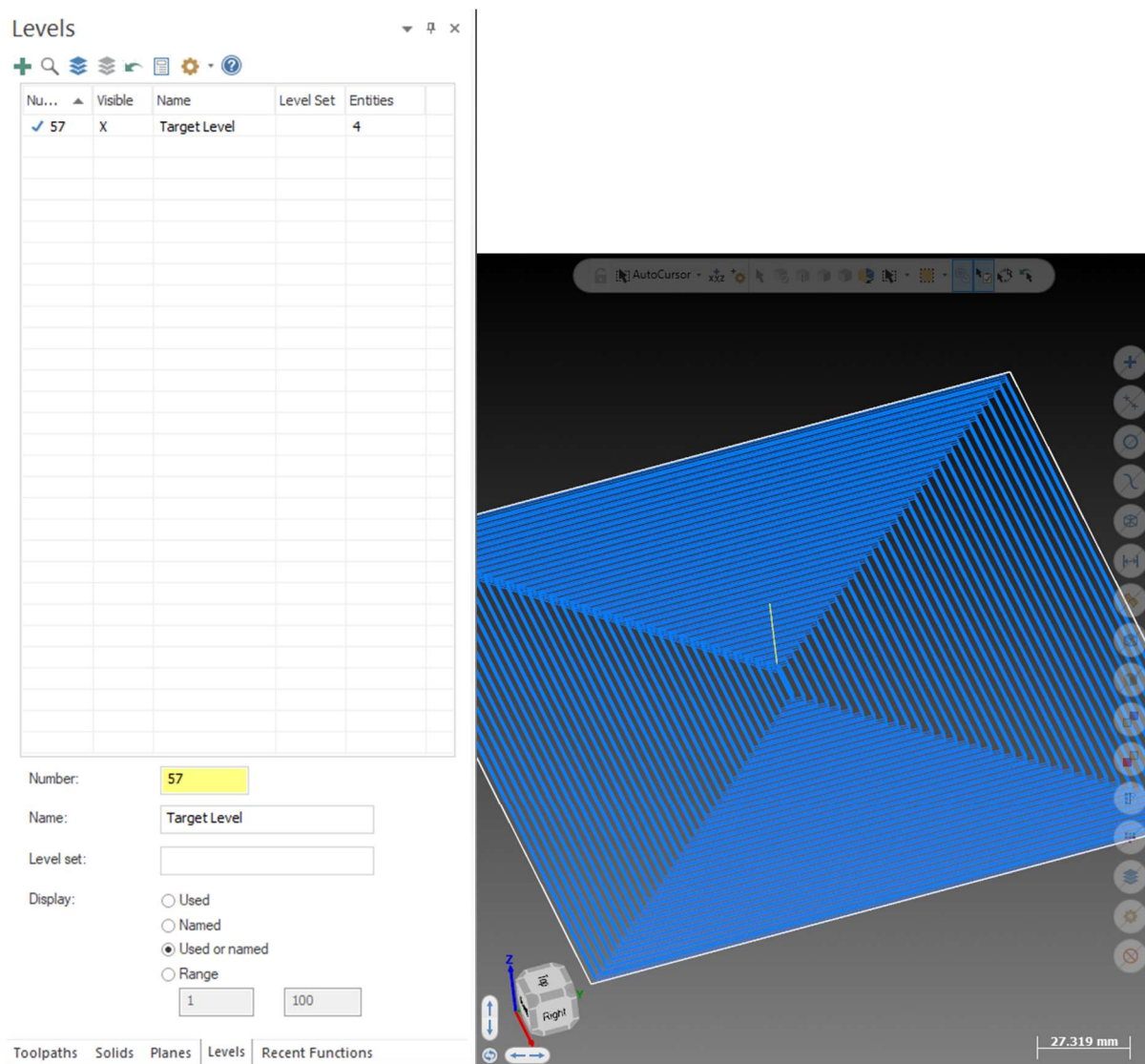
3. Verify Level Name:

- > The Excel Manager requires the name of the level in Mastercam to match the name of the level in Excel.

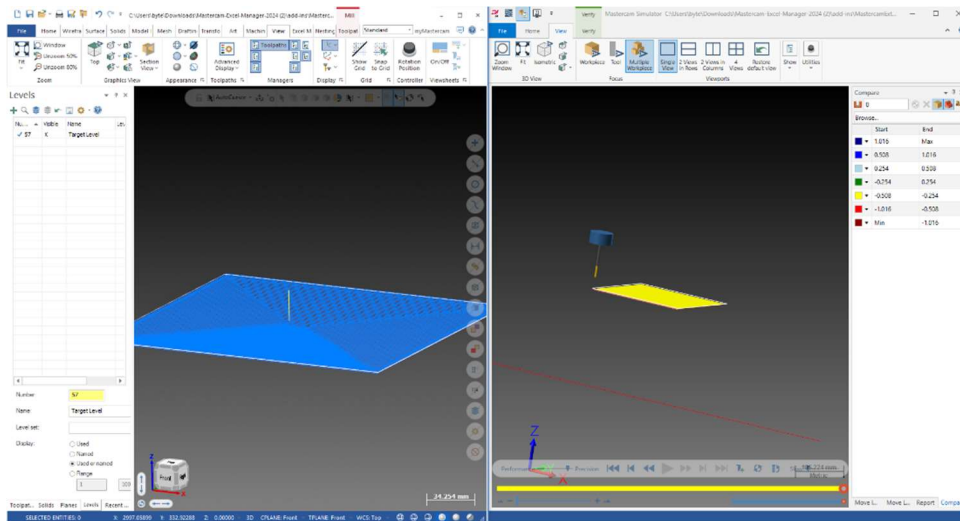
Important: **Verify the level name from excel exists in Mastercam**

4. Generate Toolpaths

- > To generate the toolpaths, add the part to Mastercam on which the toolpaths will be applied
- > Run the Excel Manager, click "run"

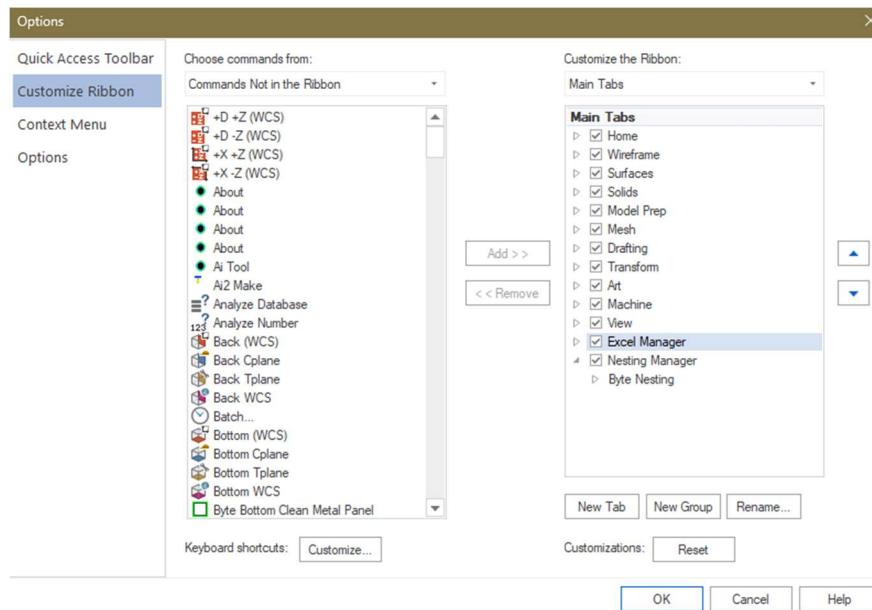


5. Saving Configuration Data: Feature coming soon. Contact support@theebyte.com



Troubleshooting

- > You can see errors in the debug logger
- > You may need to save and close the excel file before you press "run" Excel Manager
- > If the Excel Manager is not showing up in your ribbon bar, set it in "Options"



Conclusion

With the Excel Manager add-on, you can easily manage your toolpath parameters and access the data stored in an Excel sheet. The user-friendly interface and step-by-step guide make it easy for even non-technical users to get started.

Email: sales@theebyte.com

Website: www.theebyte.com

Business Partner

Mastercam[®]

